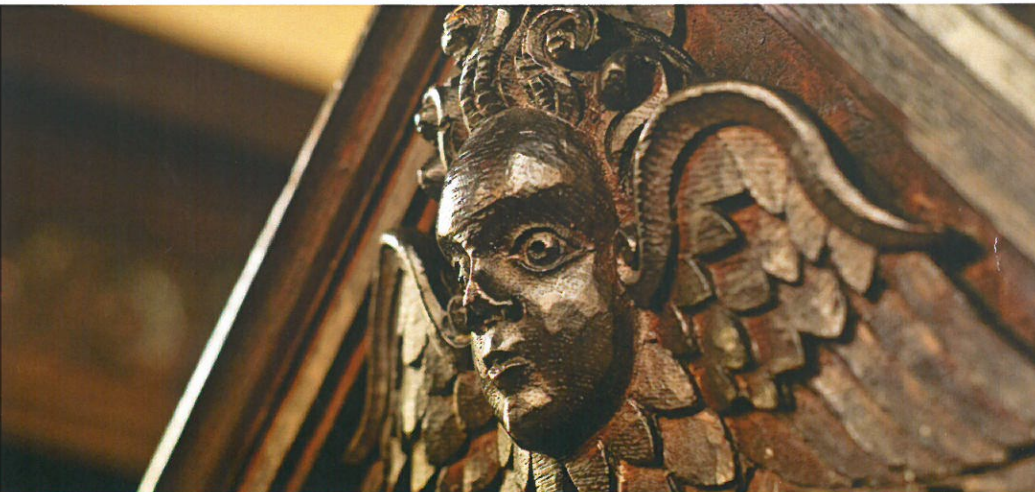


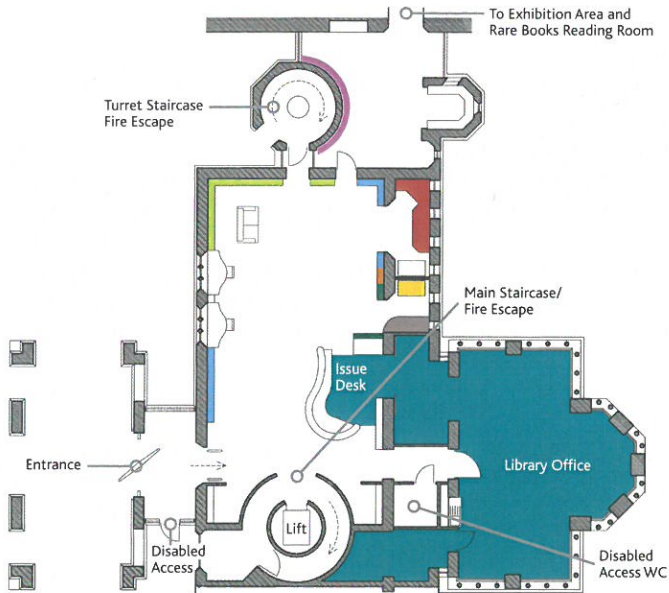


St John's College
University of Cambridge



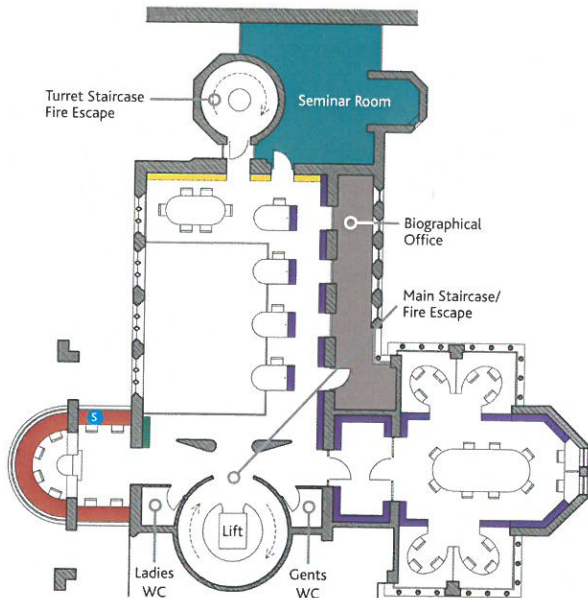
Library Map

Ground Floor



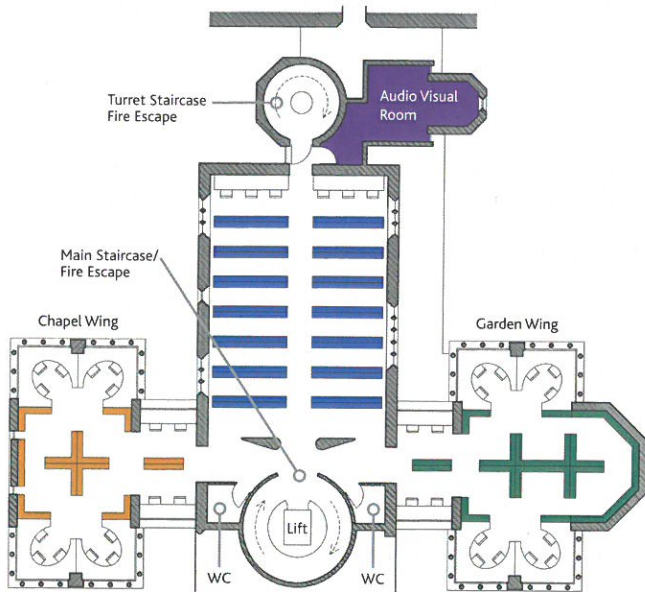
- Current Periodicals
- Reference Collection
- Past Examination Papers
- Book Returns Box, AV Returns Box
- Self-Check Machine
- Printer/Photocopier/Scanner
- Library Catalogue Terminal/ Microfilm Reader
- Display Area

Mezzanine



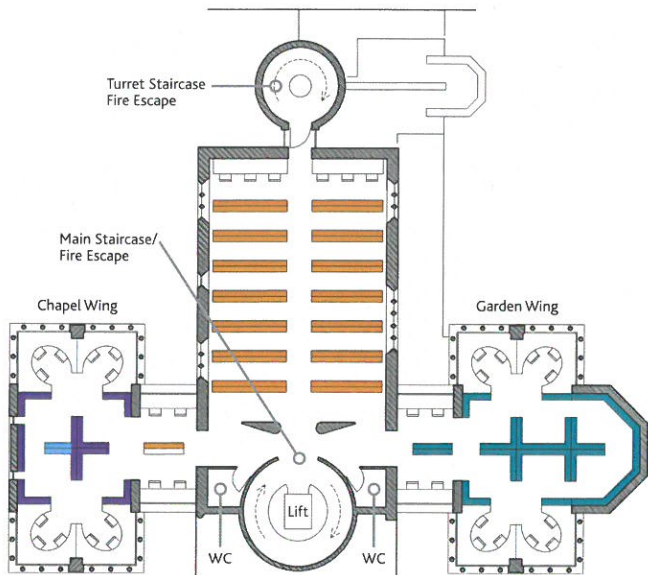
- Library Books & Oversize Q
- General Interest Collection
- Bound Journals Q-QP
- Computer Area
- Scanner

First Floor



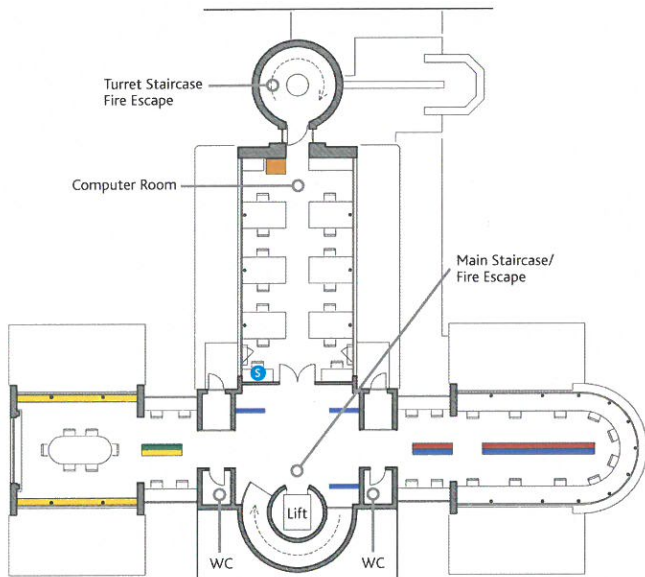
- Library Books L, M, N
- Library Books & Oversize P-Z, Bound Journals A-P
- Library Books B
- DVDs, CDs, Videos, AV equipment

Second Floor



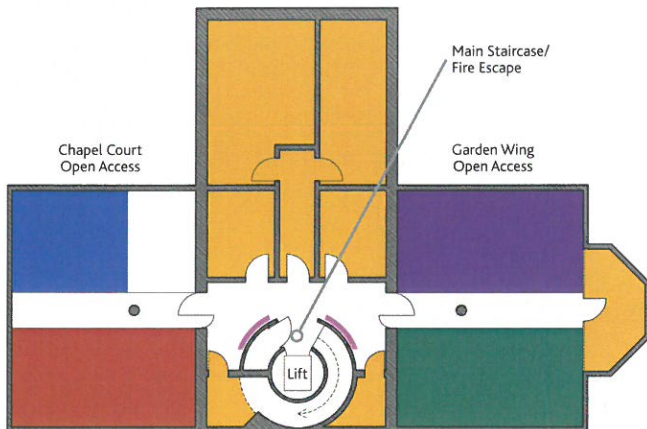
- Library Books & Oversize R, S, T
- Library Books G, H, J
- Library Books C, D, E, F
Oversize C-J
Bound Journals C-J
- Skeleton & Brain

Third Floor – John Hall Law Library



- Law Books KDC-KZZ
- Law Bound Journals K, KD
- Law Books K-KD, HV
- Law Reports K-KJE
Law Oversize KD-KJV
- Printer/Photocopier/Scanner
- Scanner

Basement



- Private Areas
- Maxwell Collection
Cartwright Collection
- Biographical Collection
Guy Lee Collection
Crook Collection
Cambridge Collection
Hoyle Collection
Boys Smith Collection
Johnian Collection
LMBC Collection
Journals A-Z
- Reference and Library of
Congress Sequence A-Z
- Basement Sequence
1-20, PR1-15
- Lockers

Contact Us

Library General Enquiries

(3)38669

library@joh.cam.ac.uk

Academic Services

(3)38662

jc614@cam.ac.uk

Special Collections

(3)39393

km10007@cam.ac.uk

Biographical Office

(3)38772

F.Colbert@joh.cam.ac.uk

College Archives

(3)38631

archivist@joh.cam.ac.uk

 @StJohns_Library

 /stjohnslibcam



Cover photograph:
Upper Library, the
Old Library.

Photo taken by Paul Everest.